

The Co-operative Academies Trust

Annual Report 2014



Our academies, sponsor and partners

The Co-operative Academies Trust is responsible for seven academies in Leeds, Manchester and Stoke-on-Trent with The Co-operative Group acting as the sponsor. The sponsorship does not involve providing money for running the academies as this still comes from the Government, but it does offer additional expertise, including governors, and access to the resources within the organisation. In addition, each academy has an educational partner from the local area to provide assistance and support.

The Co-operative's involvement in education dates back to 1844 when a group of workers from Rochdale made the decision to open their own shop in Toad Lane in an effort to provide cheaper food for working people who were struggling to pay for essentials. In an effort to raise education standards a reading room was added to the shop with people coming at night to learn by candle light. Soon after, these shops began to spread across the North of England and reading rooms became an important part of the shop.

As a business with clear moral and social values, as well as a history of valuing education, The Co-operative Group has something to offer schools, their children and the communities they serve.

Sponsorship by The Co-operative Group has brought opportunities for governors, staff and students/pupils to access expertise from within the business **for the benefit of pupils/students**. These include:

- providing high quality governors drawn from senior managers in the Group and local co-operative membership
- supporting training for academy prefects
- providing Headteachers/Principals and governors with highly qualified leadership specialists
- community outreach and support initiatives including inspiring talks by senior executives to students
- mentoring and work experience for over 200 students
- advice and guidance on childhood bereavement
- reward sessions for students showing an improved attitude to learning at the Group's headquarters



The Co-operative Academies Trust Achievements 2013 -2014

Improvements in the progress made by pupils and students at all academies



Formation of a new central Trust management team led by Frank Norris, former senior HMI with Ofsted



Two schools judged 'good' by Ofsted and another showing significant improvement



Preparation for amalgamation in to one Trust including recruitment of Board members, development of a Scheme of Delegation, TUPE consultation, one integrated finance system and chart of accounts, tendering for a single payroll provider, and alignment of key policies

All Ofsted reports identify the positive impact of the Trust and the role of governors



Refinement of risk assessment process for pupil/student achievement to ensure governors are fully aware of emerging educational issues



Appointment of two Principals (due to retirement) and four Vice Principals (due to promotion and leadership restructuring)



First annual conference for governors held at The Co-operative Group's Headquarters in Manchester with highly positive feedback from delegates



Construction and development of a new sponsored primary academy in Harehills, Leeds, to be called Nightingale Primary Academy



Sutton Trust report 'Chain Effects' identifies the Trust as effective (6th out of 31 chains in the survey) in supporting disadvantaged students



Business In The Community - Big Tick Award



Collaborative work with The Co-operative Group identified for a Big Tick Award



Brownhill Primary Academy

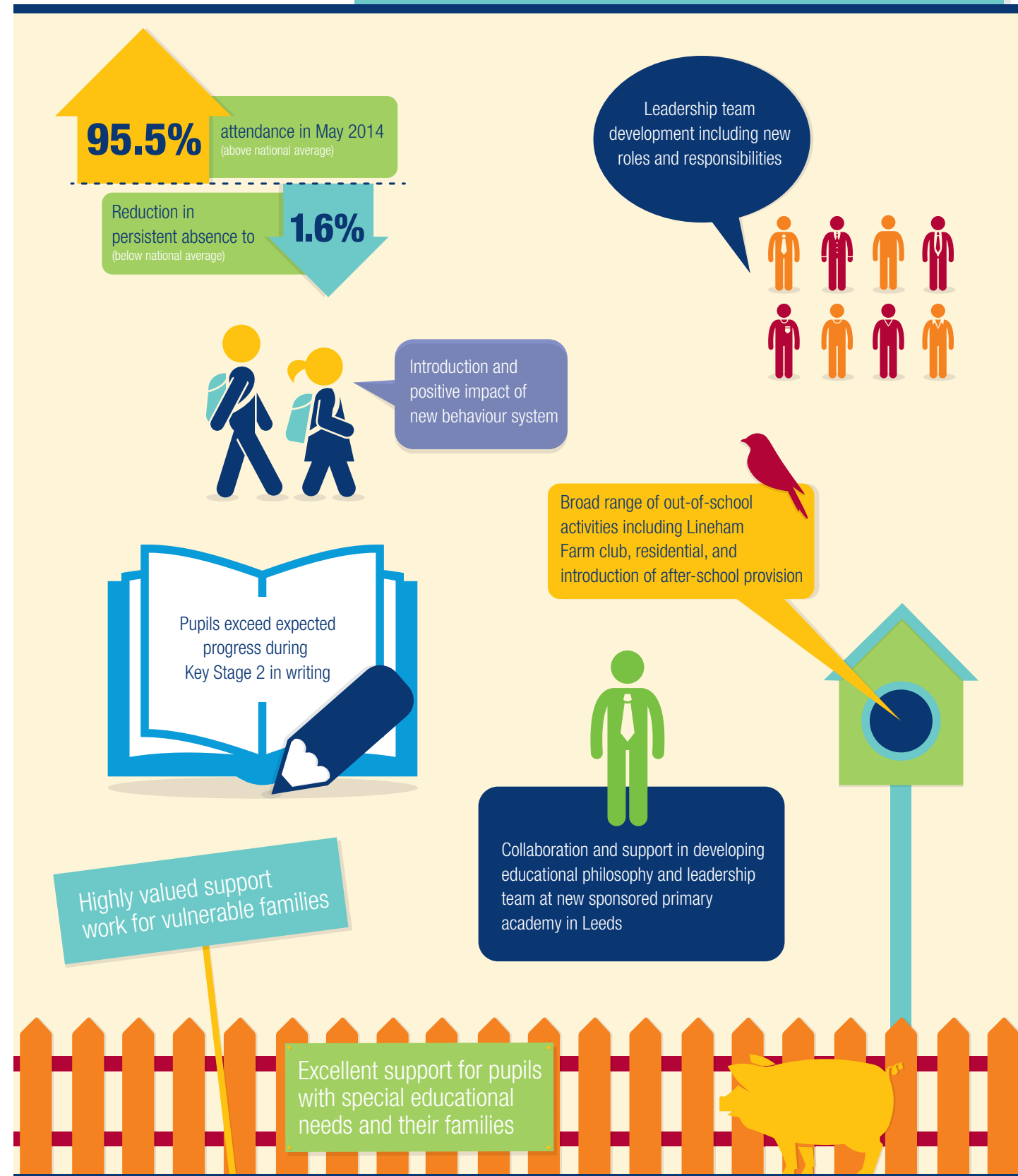
Judged GOOD by Ofsted
June 2014 – the first time
in the school's history



Oakwood Primary Academy

94% of provision in school
judged 'good' or better

(Learning Review 2014)





Woodlands Primary Academy

Judged good by Ofsted
in June 2014

Good

**New teachers make
excellent progress
and judged as good
or better**

Ofsted 2014

56%

rise in the proportion
of children achieving
Gold and Silver
R.E.S.P.E.C.T
badges

14% rise in Early Years'
results since 2013

2.2% rise in attendance
rates since 2013

2.2%

14%

Over 35% of
pupils make better
than expected progress
in the majority of year groups
in Key Stage 2

Over **10%** rise in
Key Stage 1 results in
reading, writing and
mathematics since 2013

'Safe Harbour'
language provision
leads to outstanding
progress for new arrivals
(Ofsted 2014)

Over **£1000**
raised for Sports Relief

Key Stage 2 Christmas
production is huge success

Early Years'
provision described as
'exceptional'
by Her Majesty's Inspector

Athletics team reaches final
of North Leeds tournament

Football team reaches
semi-final of Leeds
Schools Competition

Shortlisted for
International School
of the Year by TES



The **co-operative**
academy of Leeds

More than
1.2%
improvement in
overall attendance
over previous year

Diversity Day
brings together students
from across the globe
to appreciate each
other's cultures

Partnerships with over
50 businesses brings the
world of work into the classroom
and Careers' Fair attracts
record numbers

Year 11 football team
celebrate cup and
league success
with tour to
Holland winning
all matches

Staff and students go back in time
to get a taste of life in World War Two,
as part of the Guild Theme Day

Production of CATS brings
the year to a stunning close

Success in athletics led by Bartos
Wilczinski, Shot Putt Champion of
Leeds, reaching an incredible four
metres further than any other student
in the city

National Average

Progress made by Year 10
students now at or above
national averages

35% of students
have made better
progress than
expected for
their age in
reading

4m



The **co-operative**
academy of Manchester

In the top 1% of schools nationally for closing Pupil Premium attainment gap in 2013



Fischer Family Trust



Successful track record of
Teach First placements

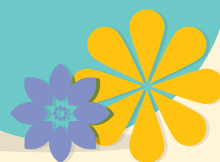
Development of
Adult Education Centre
into Business Incubation
Project



Launch of new 3G pitch and
new community partnership
with Manchester City FC



Recipient of
RHS Gold award and
Highly Commended in this
year's RHS Tatton Park Show



Year 7 intake increased
significantly from 92 to
152 (2014)

Most improved school in
Manchester (2013) for 5 A* - C,
including English and Maths,
and shortlisted for Manchester
Evening News School of the
Year award



97.2%

0.51%

97.2% attendance – the
highest of all secondary schools
in Manchester

Second lowest persistent
absence rate in across the
city at 0.51%

Business In
The Community
– Big Tick Award

Successful partnership
work across North
Manchester, leading to
IAG Gold Award



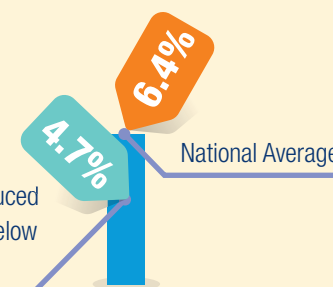
The **co-operative**
academy of Stoke-on-Trent

Leading Edge status awarded due to outstanding student progress



SSAT
educational
outcomes award

Persistent absence reduced
to 4.7% (significantly below
national average)



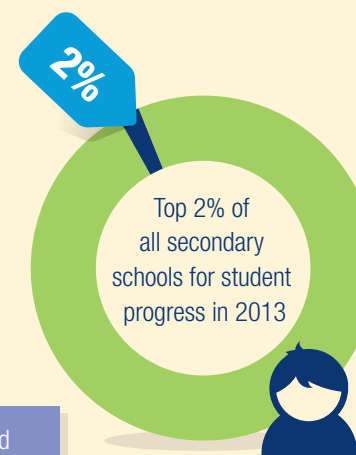
Appointment of new Principal and a Vice
Principal from within existing management
team due to retirement of highly
regarded Principal



'Teach First' staff
successfully complete their
two-year programme and
'Future Leaders' recruit from
within the staff team



Co-operative Young Leaders and
Industrial Cadets programmes
provide outstanding opportunities
for community engagement
and leadership skills



Most improved
GCSE results in the
city of Stoke 2014



Recognised as a
leading centre for STEM
work resulting in visit
from Tristram Hunt MP

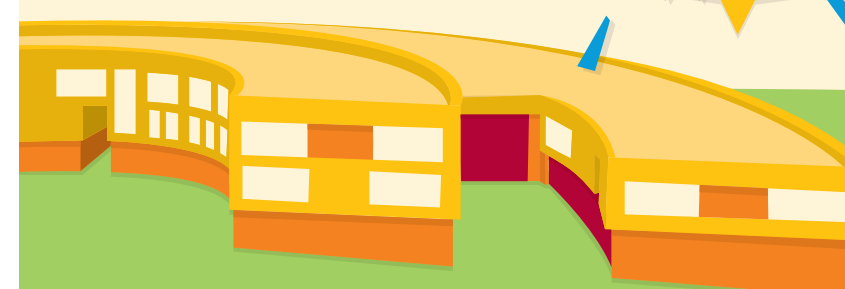


Annie

Performance of 'Annie'
a fantastic success



Outstanding buildings and facilities management
enables full use of new sports facilities and
wider opportunities for the community and
students after school and during holiday periods






Looking forward

The Co-operative Academies Trust is merging its three Trusts into one central Trust commencing in September 2014. This will further strengthen the existing governance arrangements and provide more transparent accountability.

A new Trust board has been appointed and additional members will join the board during autumn 2014. The new Trust arrangements place full responsibility for effective and efficient operational matters in the hands of the local academy governing bodies. These arrangements will need to be monitored and reviewed regularly to ensure they are fully fit for purpose.

By January 2015 the building of the new primary school in Leeds, Nightingale Primary Academy, will be complete and the first group of 60 pupils will have settled into their Reception classes. This provision will provide an opportunity for the trust to show how it can further regenerate local communities through high-class educational provision.



The improvements achieved by all academies during the last year have encouraged other schools and academies to consider joining the Trust. Supporting new schools and academies on their journey of improvement will be a key area of work in the next year or two. Further consideration will be given to the speed of any future growth in the Trust over the next few years. In addition, the Trust will continue to develop new partnerships with other local schools such as the one with West Oaks Special Educational Needs Specialist School and College.

The government is introducing significant changes to curriculum requirements and the examinations that pupils and students experience. Individual academies have responded positively to these changes but the Trust intends increasing the opportunities for teachers at our academies to discuss these changes and to learn from each other. In support of this, the Trust is developing a leadership and management Masters programme with Manchester Metropolitan University and is providing high-quality evaluation and inspection training for all senior leaders in its academies in autumn 2015.

The Trust is developing a sustainable local teaching workforce through offering seven School Direct placements in the Leeds area and intends continuing to support the Teach First programme.

The well-received governor conference will take place again in 2015 and an inaugural Trust-wide awards evening will be held at The Co-operative Group's headquarters in late February.

The focus of the Trust's work will continue to be supporting senior leaders in ensuring pupils and students receive the highest quality of teaching so that they can achieve the best possible outcomes in academic and personal development terms. Our Trust and its academies believe that the principles and values of the co-operative movement remain highly relevant for today's world and they are a solid foundation for life-long learning.

Contact information

The Co-operative Academy of Leeds

Stoney Rock Lane
Leeds LS9 7HD

Tel: 0113 380 7940

Email: info@cal.coop

The Co-operative Academy of Manchester

Plant Hill Road
Higher Blackley
Manchester M9 0WQ

Tel: 0161 795 3005

Email: enquiries@cam.coop

The Co-operative Academy of Stoke-on-Trent

Westport Road
Tunstall, Stoke-on-Trent
Staffordshire ST6 4LD

Tel: 01782 882300

Email: enquiries@cas.coop

Brownhill Primary Academy

Brownhill Primary School
Torre Drive
Leeds LS9 7DH

Tel: 0113 2489539

Email: secretary@brownhill.coop

Nightingale Primary Academy

Stanley Road
Harehills
Leeds LS9 7AX

Tel:

Email: headteacher@nightingale.coop

Oakwood Primary Academy

North Farm Road
Leeds LS8 3LZ

Tel: 0113 240 2526

Email: headteacher@oakwood.coop

Woodlands Primary Academy

Foundry Place
Leeds LS9 6DA

Tel: 0113 2407382

Email: headteacher@woodlands.coop

The Co-operative Academies Trust

Department 10701
1 Angel Square
Manchester M60 0AG

Tel: 0843 751 3069

Email: Frank.Norris@co-operative.coop

In Memoriam

Mr Duncan Strowger 1980 - 2014 (The Co-operative Academy of Stoke)

Duncan was an excellent science teacher,
a supportive colleague and a well loved
Community Coach and he will be sadly missed.